

---

# Asteel Installation Guide



Copyright 2007 CDS, Inc. All rights reserved.

Copyright 2007 Autodesk, Inc. All rights reserved.

The software contains proprietary information of CDS. It is provided under a license agreement containing restrictions on use and disclosure and is also protected by copyright law. Reverse engineering of the software is prohibited.

Due to continued product development this information may change without notice. The information and intellectual property contained herein is confidential between CDS and the client and remains the exclusive property of CDS. If you find any problems in the documentation, please report them to us in writing. CDS does not warrant that this document is error-free.

No part of this publication may be reproduced, stored in a retrieval system, or transmitted in any form or by any means, electronic, mechanical, photocopying, recording or otherwise without the prior written permission of CDS.

AuthorIT™ is a trademark of Optical Systems Corporation Ltd.

Microsoft Word, Microsoft Office and all flavors of Windows® are trademarks of the Microsoft Corporation.

This document was created using *AuthorIT™, Total Document Creation* (see "AuthorIT Home - <http://www.author-it.com>").

**CDS Inc.**  
111 Spring Hall Drive  
Goose Creek  
SC, 29445  
USA  
(843) 552-6741  
E-Mail: [cds@asteel.com](mailto:cds@asteel.com)  
Website: <http://www.asteel.com>

# Contents

<b>Introduction</b>	<b>1</b>
About This Guide .....	1
<b>Installing Asteel 3D and Asteel 2</b>	<b>3</b>
Launching the Installer .....	3
The Installer .....	4
Installing the Asteel 3D Toolbar in AutoCAD .....	6
<b>Index</b>	<b>9</b>



# Introduction

---

## About This Guide

This guide will walk you through installing Asteel 3D and Asteel 2.

For more detailed information about Asteel 3D, see the Asteel 3D Operation Reference and the Asteel 3D Tutorial.

For more detailed information about Asteel 2, see the Asteel 2 Operation Reference and the Asteel 2 Tutorial.



## CHAPTER 1

# Installing Asteel 3D and Asteel 2

## In This Chapter

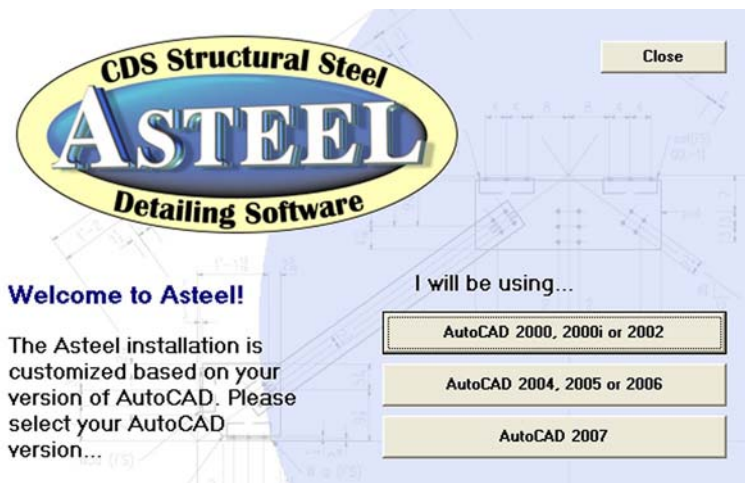
Launching the Installer.....	3
The Installer .....	4
Installing the Asteel 3D Toolbar in AutoCAD.....	6

---

## Launching the Installer

To install Asteel 3D and Asteel 2, make sure no other programs are running on your computer. Insert the Asteel CD into your computer's CD drive. The autorun program should launch automatically.

If the autorun program does not launch, then you must launch it manually. To manually launch the autorun program, open Windows Explorer and navigate to the CD drive where the Asteel CD is located. Double click autorun.exe on the root of the CD drive to manually launch the autorun program.



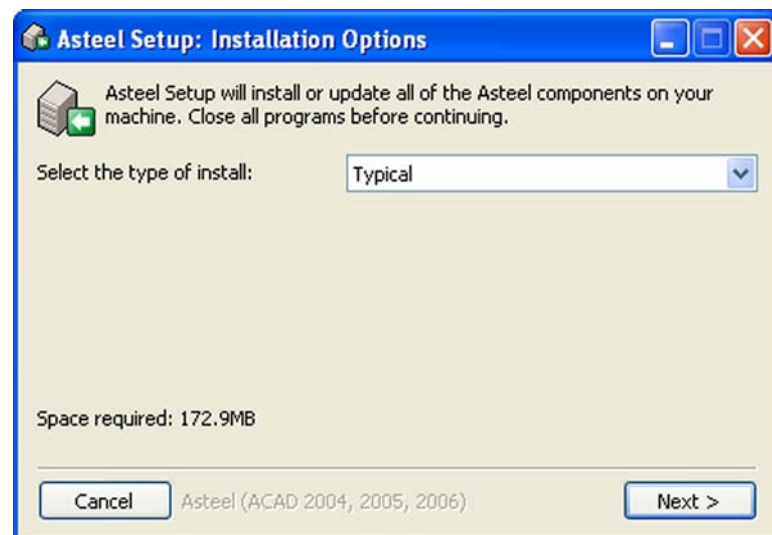
Once the autorun program has launched, select the version of Asteel 3D and Asteel 2 to install based on the version of AutoCAD you have installed. For example, if you have AutoCAD 2004 installed, then click the button "AutoCAD 2004, 2005 or 2006". If you do not have AutoCAD installed, then you may install for any version of AutoCAD. Note however that a few Asteel 2 features will be unavailable without some version of AutoCAD installed. Asteel 3D will not run without AutoCAD installed.

Once you select the version of AutoCAD to install for, the autorun program will close and the appropriate installer will launch. Details on the installer are in the next section.

---

## The Installer

Once the autorun program closes, the Installation Options screen of the installer will be displayed:

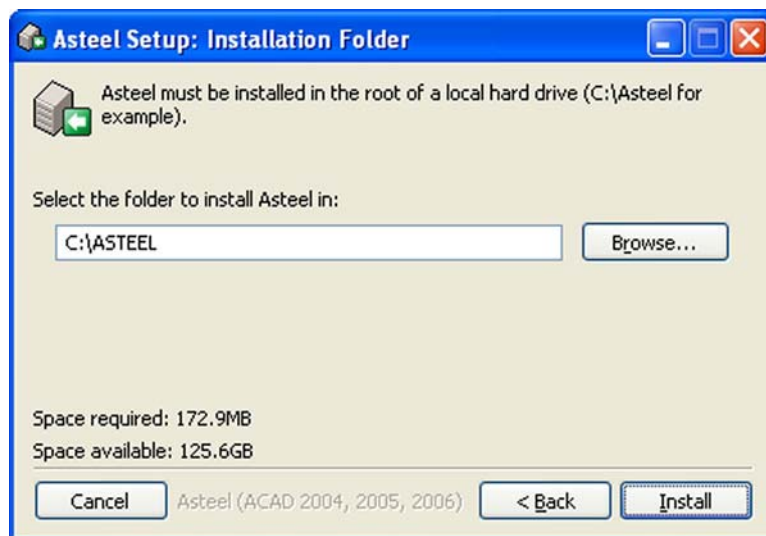


The Installation Options screen allows you to select where the program shortcuts will be created on your system. If you select Typical (the default), then the shortcuts will be created on your Desktop and in the Start Menu. If you select Custom, then a checklist of shortcut options will appear:



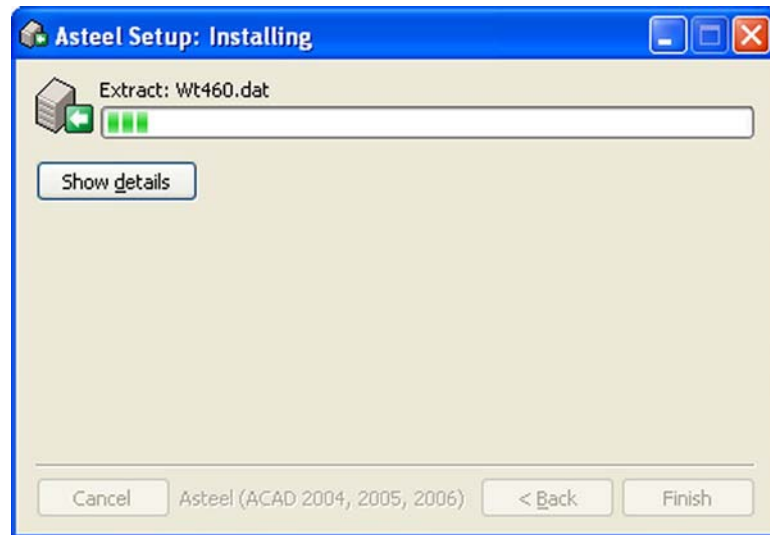


With the checklist you will be able to choose whether or not to install shortcuts to the Quick Launch toolbar or the Desktop. The installer always installs shortcuts to the Start Menu. Once you have selected your shortcut options, click Next to continue. The Installation Folder screen will be displayed:



The Installation Folder screen allows you to specify the hard drive onto which Asteel 3D and Asteel 2 will be installed. You must install to the root directory of a local hard drive (G:\Asteel for example). If you must install into a subfolder, then map a drive to the subfolder and use the mapped drive as the installation directory.

Select the drive then click Install to continue. The Installing screen will then be displayed:



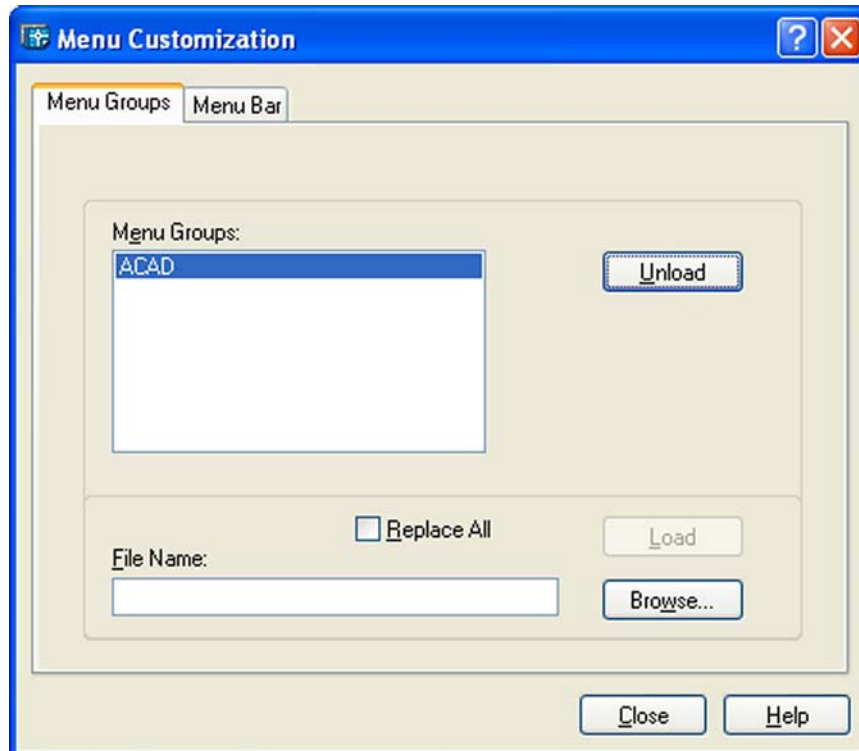
Once the installation is complete, click the Finish button to exit the installation program. Asteel 2 is now fully installed on your system. To install the Asteel 3D toolbar in AutoCAD, proceed to the next section.

---

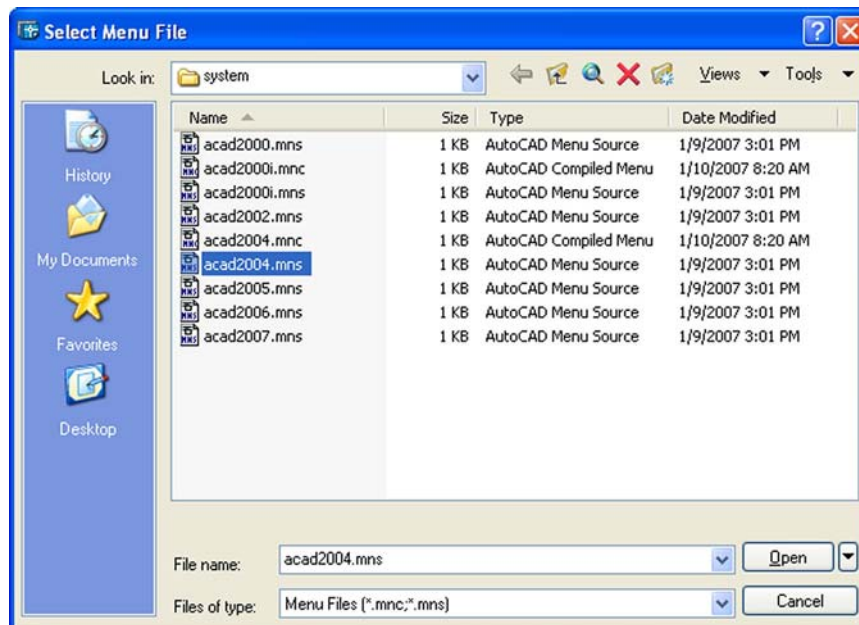
## Installing the Asteel 3D Toolbar in AutoCAD

In order to launch Asteel 3D, you must install the Asteel 3D toolbar in AutoCAD. The steps involved vary slightly depending on the version of AutoCAD you are using.

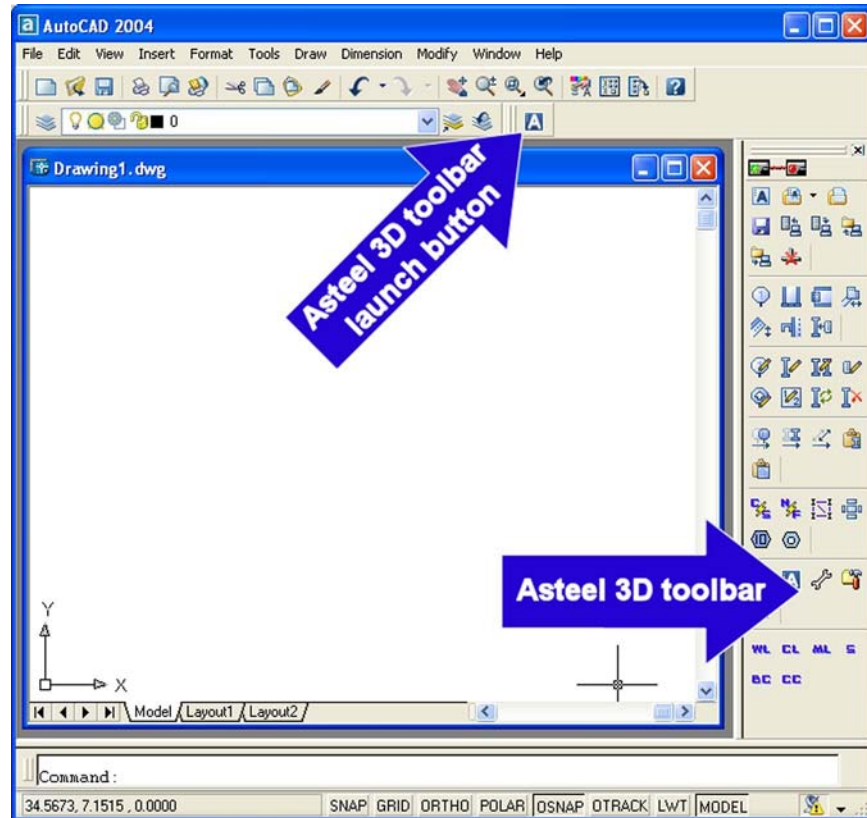
If you are using AutoCAD 2006 or higher, type CUILOAD at the AutoCAD command line. If you are using AutoCAD 2005 or lower, type MENULOAD at the AutoCAD command line. A dialog will appear that allows you to customize your AutoCAD menu:



Click the Browse button and select the appropriate mns file based on your version of AutoCAD. The msn files are located in the \Asteel\modeler\system folder. For example, if you are using AutoCAD 2004, then select the \Asteel\modeler\system\acad2004.mns file. Once you have selected an mns file, click the Open button.



Click the Load button and then close the window. The Asteel 3D toolbar launch button should now be installed. Clicking the launch button will launch the Asteel 3D toolbar.



# Index

## A

About This Guide • 1

## I

Installing Asteel 3D and Asteel 2 • 3

Installing the Asteel 3D Toolbar in AutoCAD • 6

Introduction • 1

## L

Launching the Installer • 3

## T

The Installer • 4